

MIRROR[®]

BIM & ENGINEERING SERVICES



H
ndos

VBH
Condos

VBH
Drop-off rotunda

VBH
Speciality Restaurant

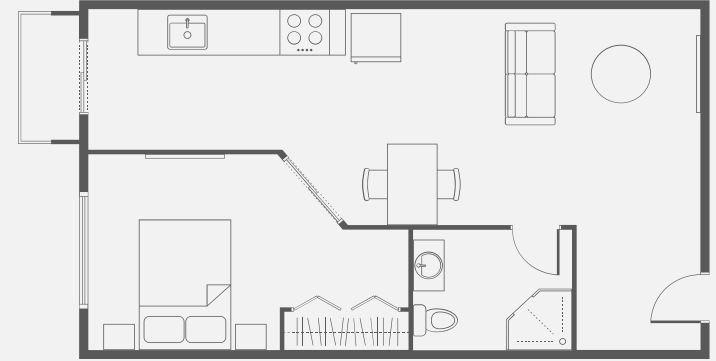
OVER VIEW

About us

As a passionate and detail-oriented BIM Architects, we are specialized in creating intelligent 3D models and coordinating architectural designs using Revit and other BIM software. With over [9 years of experience in residential, commercial, and mixed-use projects, we bring efficiency, innovation, and precision to every project we take on.

Skills & Tools

- BIM Software: Revit, Navisworks, AutoCAD, BIM 360
- Modeling: Architectural, Structural, MEP & ID modeling, family creation, LOD 100–500
- Coordination: Clash detection, interdisciplinary coordination
- Documentation: Construction documents, shop drawings, schedules
- Standards: Familiar with IFC, ISO 19650, and project standards
- Others: Inscape, 3dsmax, vray, Lumion (for rendering)



PREVIOUS PROJECTS

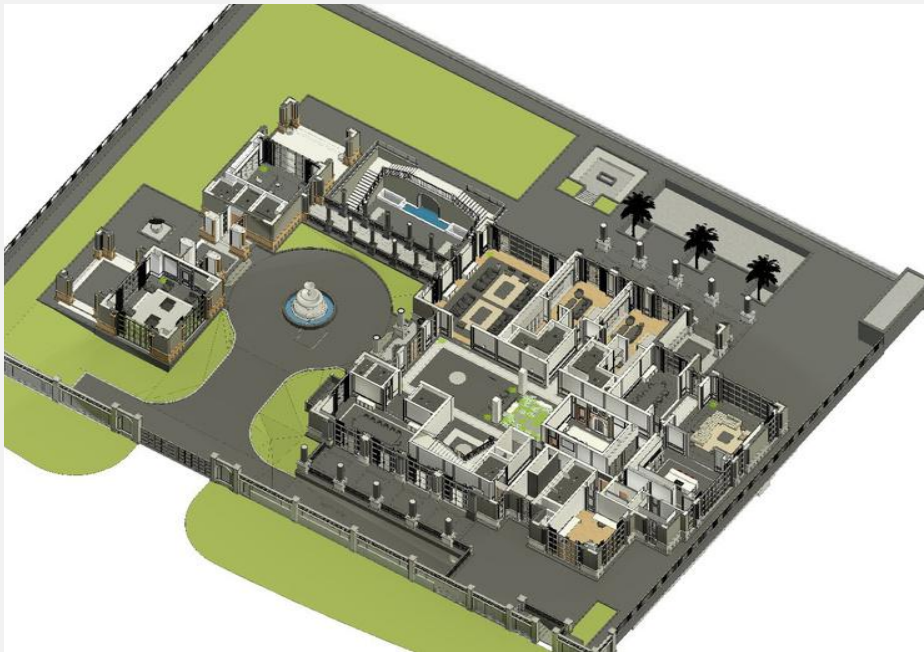
LUXURY RESIDENTIAL VILLA

- **Location:** Sobha Heart Land II, Dubai UAE
- **Client:** PNC Architects, Sobha Developments
- **Scope:** Full BIM Architectural, Structural, MEP Modeling.
- **LOD:** 400-500

SERVICES OFFERED

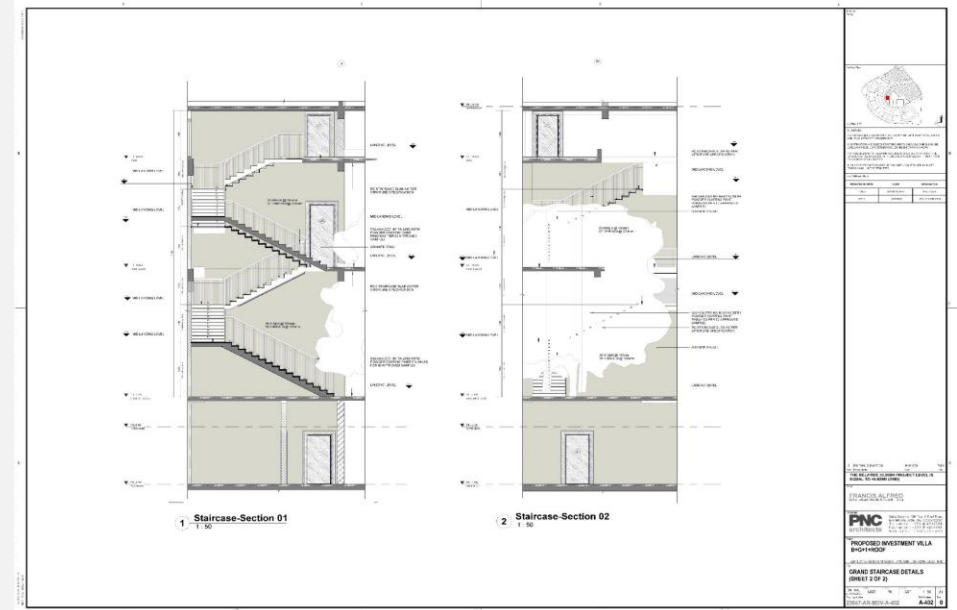
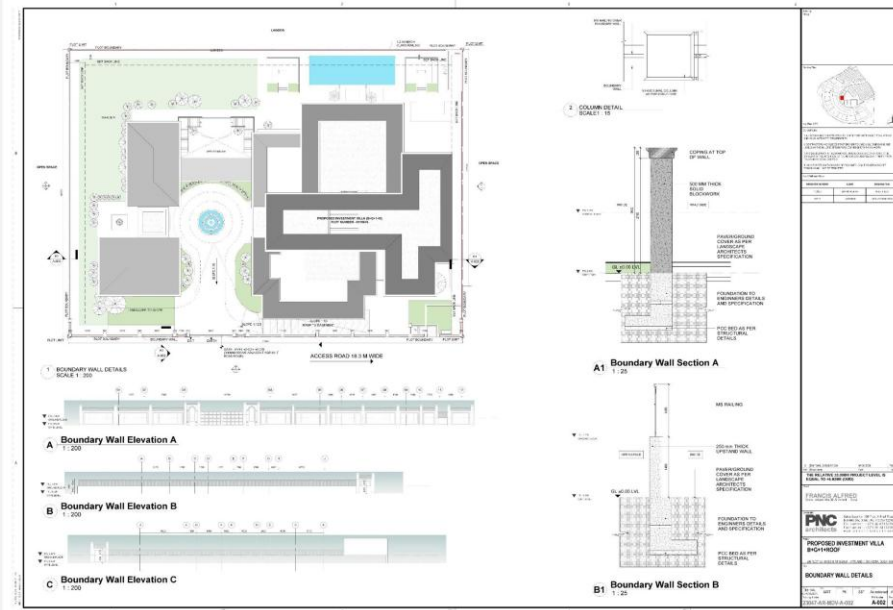
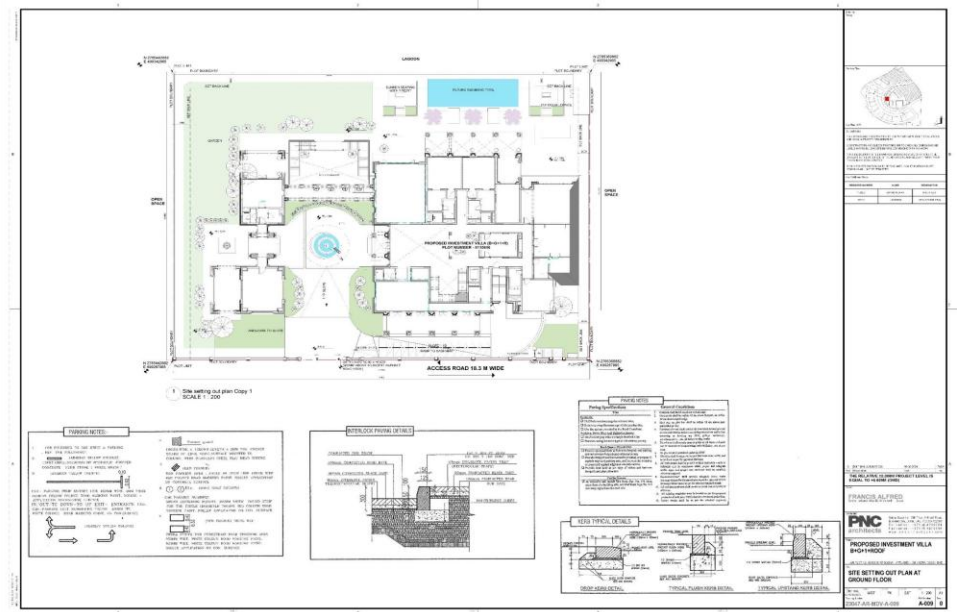
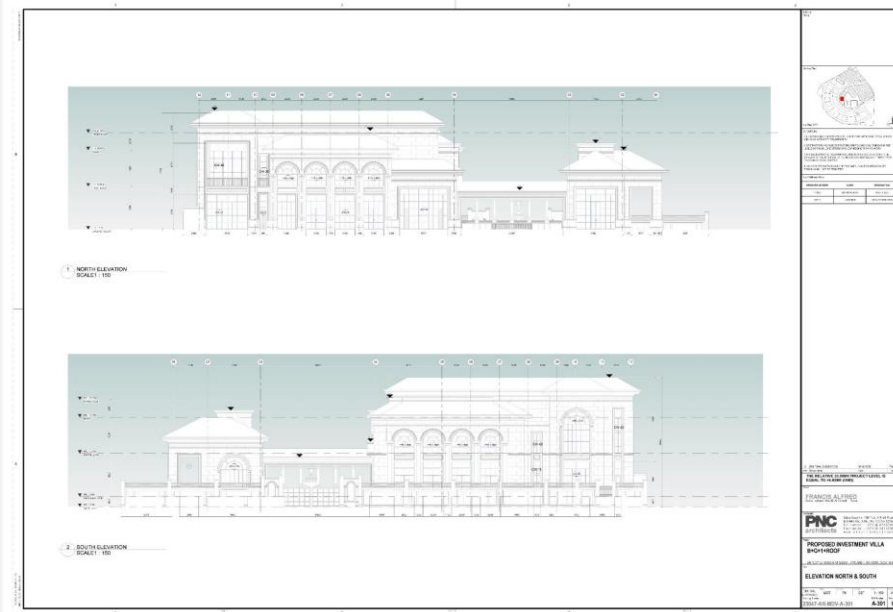
- BIM modeling for Architectural, Structural, MEP & ID Modeling.
- Family creation (parametric and custom)
- Clash detection and coordination
- Scan to BIM (Point Cloud conversion)
- Construction documentation (CDs)
- Revit template customization
- BIM implementation support











RADIANT SQUARE TOWERS

- **Location:** REEM ISLAND, ABU DHABI, UAE
- **Client:** Radiant Developments
- **Scope:** Full BIM Architectural, Structural, MEP Modeling.
- **LOD:** 400-500

SERVICES OFFERED

- BIM modeling for Architectural, Structural, MEP Modeling.
- Family creation (parametric and custom)
- Clash detection and coordination
- Scan to BIM (Point Cloud conversion)
- Construction documentation (CDs)
- Revit template customization
- BIM implementation support

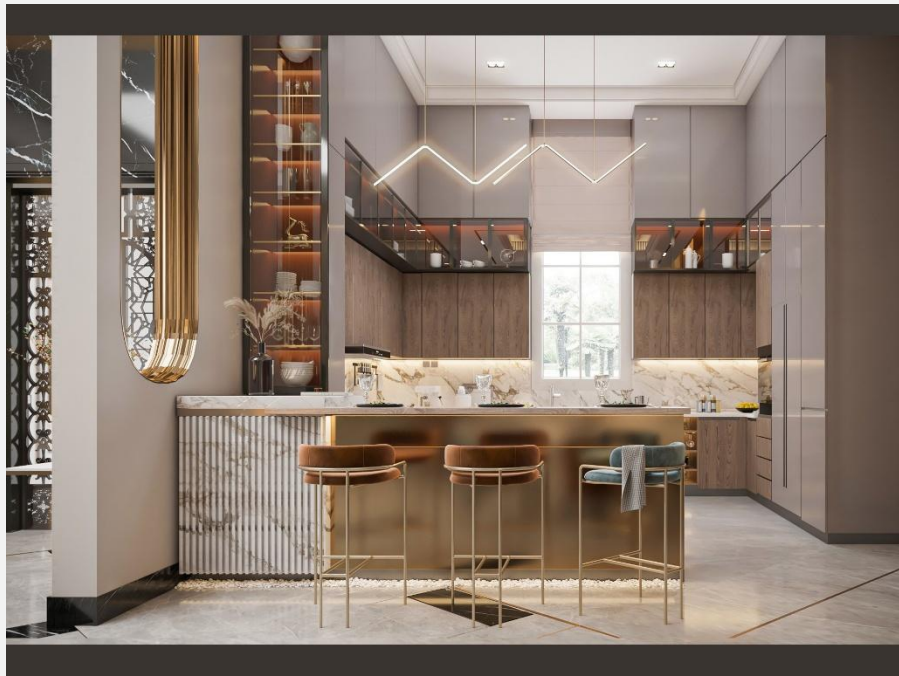




CONSTRUCTION

EXTERIOR





Guggenheim Museum Abu Dhabi

- **Location:** SAADIYAT ISLAND, ABU DHABI, UAE
- **Client:** FIBREX Construction group
- **Scope:** Full BIM Architectural Façade Modeling – Revit
- **LOD:** 400-500

SERVICES OFFERED

- BIM modeling for Architectural Façade
- Family creation (parametric and custom)
- Clash detection and coordination
- Scan to BIM (Point Cloud conversion)
- Construction documentation (CDs)
- Revit template customization
- BIM implementation support



CENTRE OF CURIOSITY

- **Location:** SAADIYAT ISLAND, ABU DHABI, UAE
- **Client:** FIBREX Construction group
- **Scope:** Full BIM Architectural Façade Modeling – Revit
- **LOD:** 400-500

SERVICES OFFERED

- BIM modeling for Architectural Façade
- Family creation (parametric and custom)
- Clash detection and coordination
- Scan to BIM (Point Cloud conversion)
- Construction documentation (CDs)
- Revit template customization
- BIM implementation support



PROJECT OVERVIEW

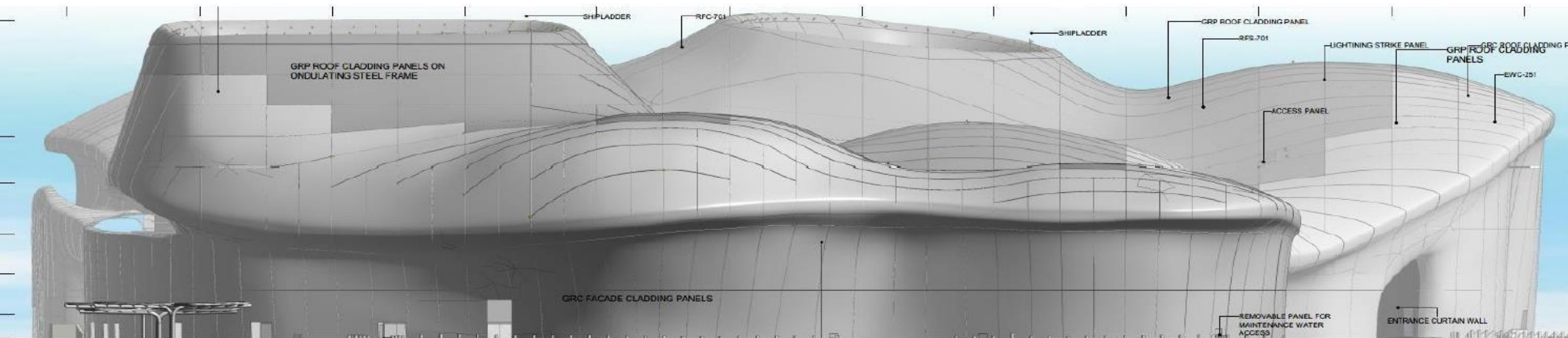
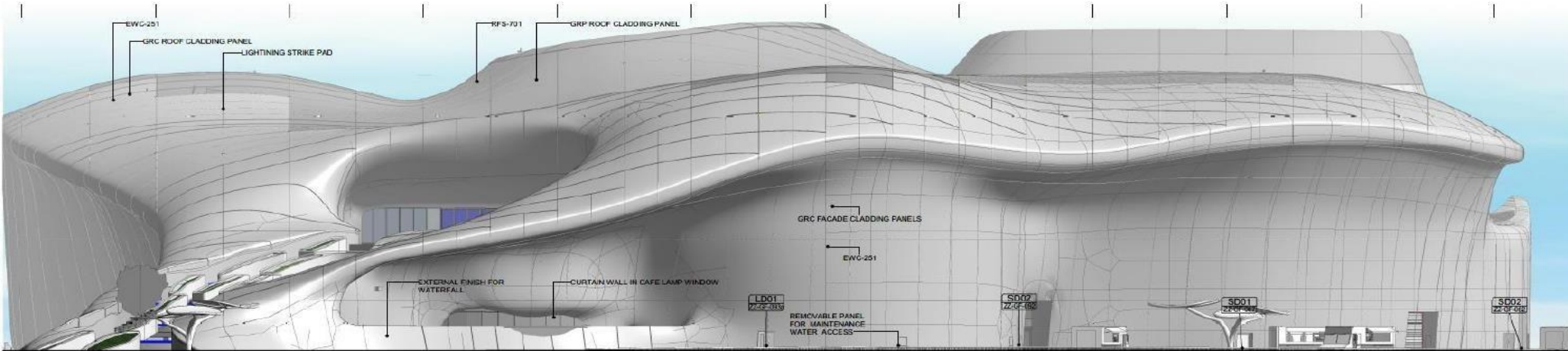


Project Site Location

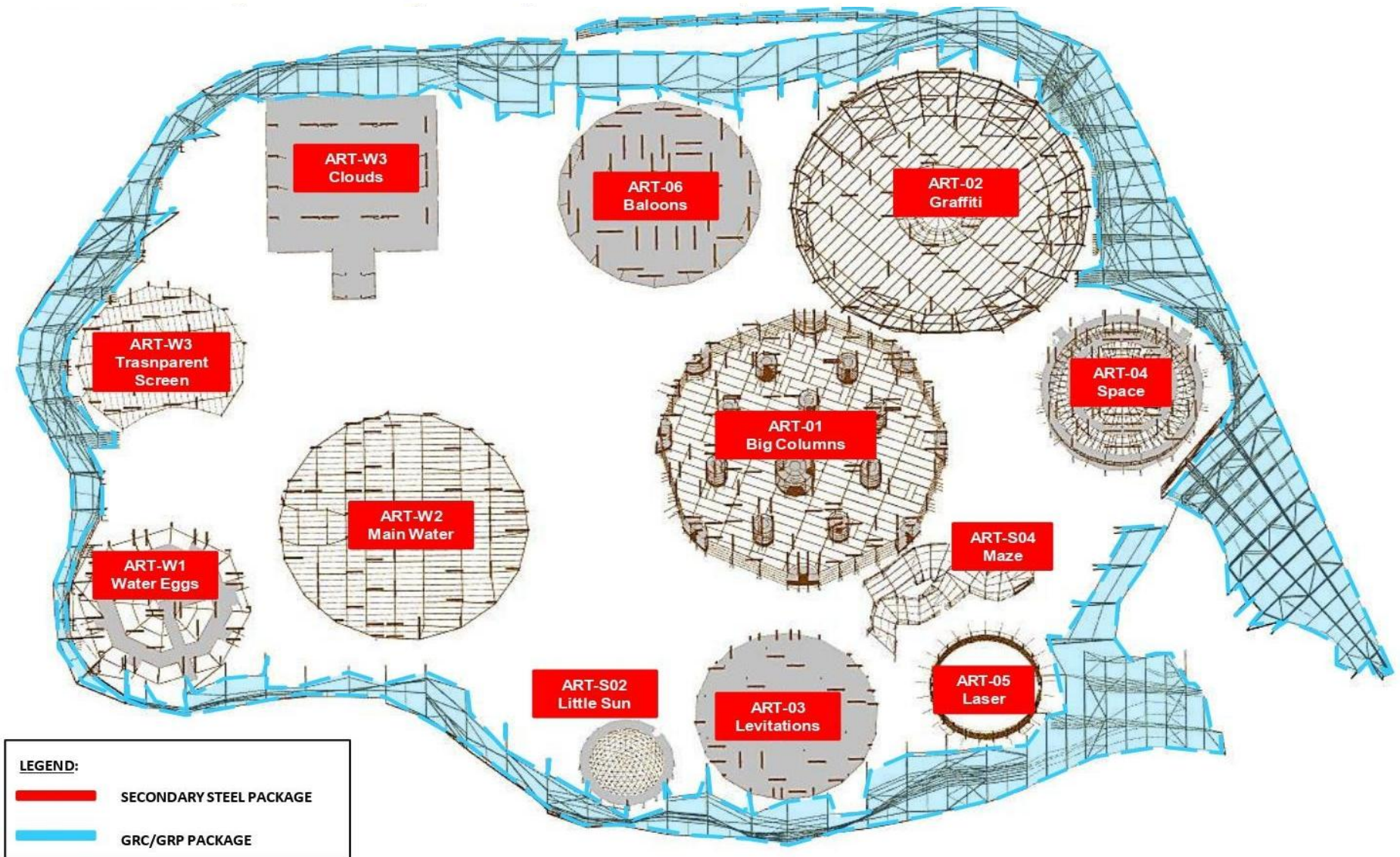


Overview: GRP & GRC Works

SCOPE OF WORKS

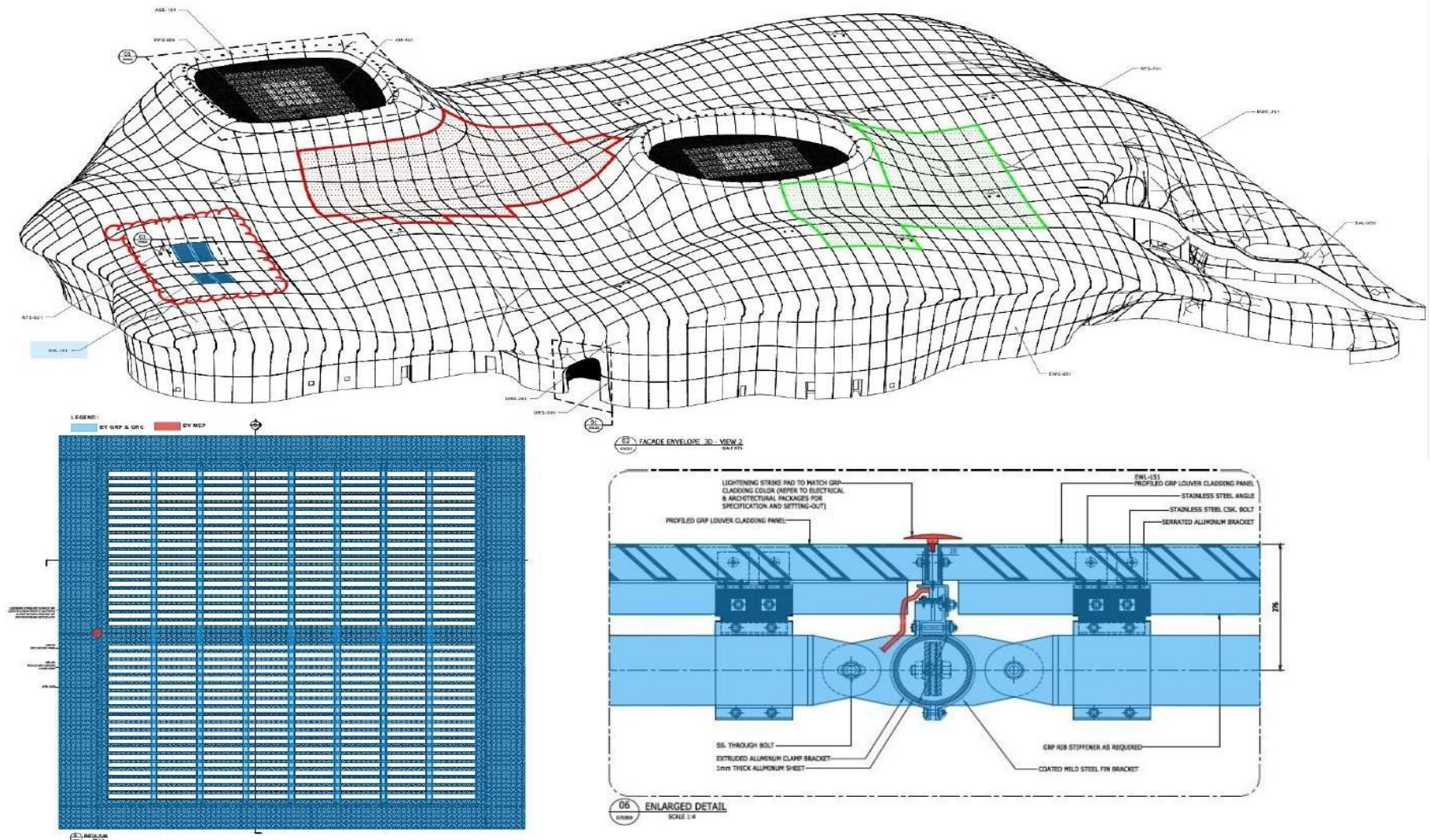


SCOPE OF WORKS



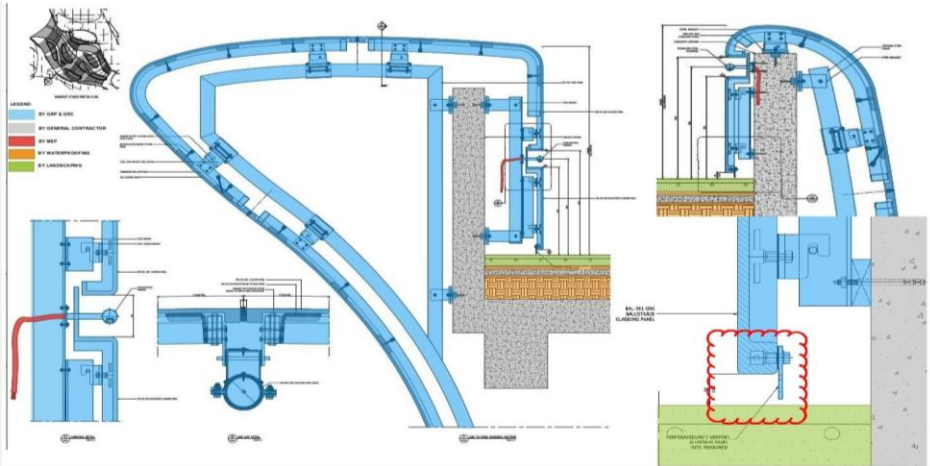
SCOPE OF WORKS

EWL-151 Profiled GRP Louver Cladding Panel

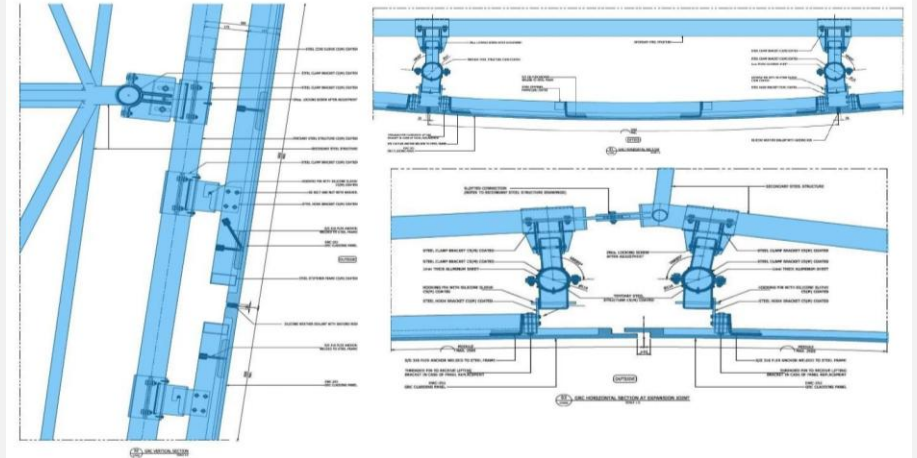


SCOPE OF WORKS

BAL-951 GRC Balustrade Cladding Panel



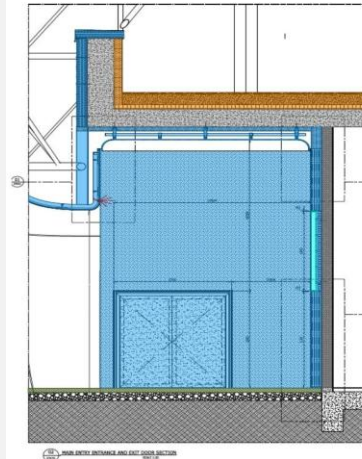
EWC-251 Glass Reinforced Concrete (GRC) Cladding System



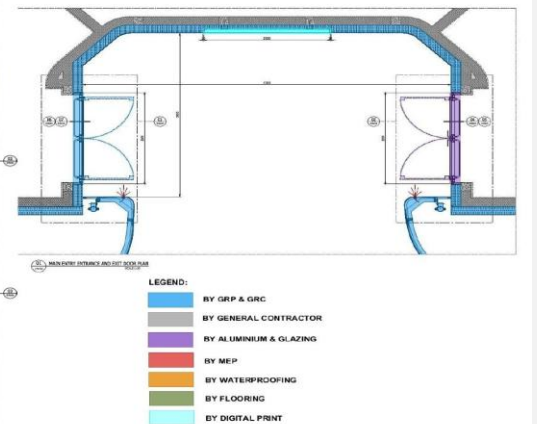
EWA-351/EWA-352 Proprietary Insulated Render System (EIFS)



Gypsum Ceiling System on Structural Concrete Slab Soffit (External)



DRS-251 GRC Cladded Door

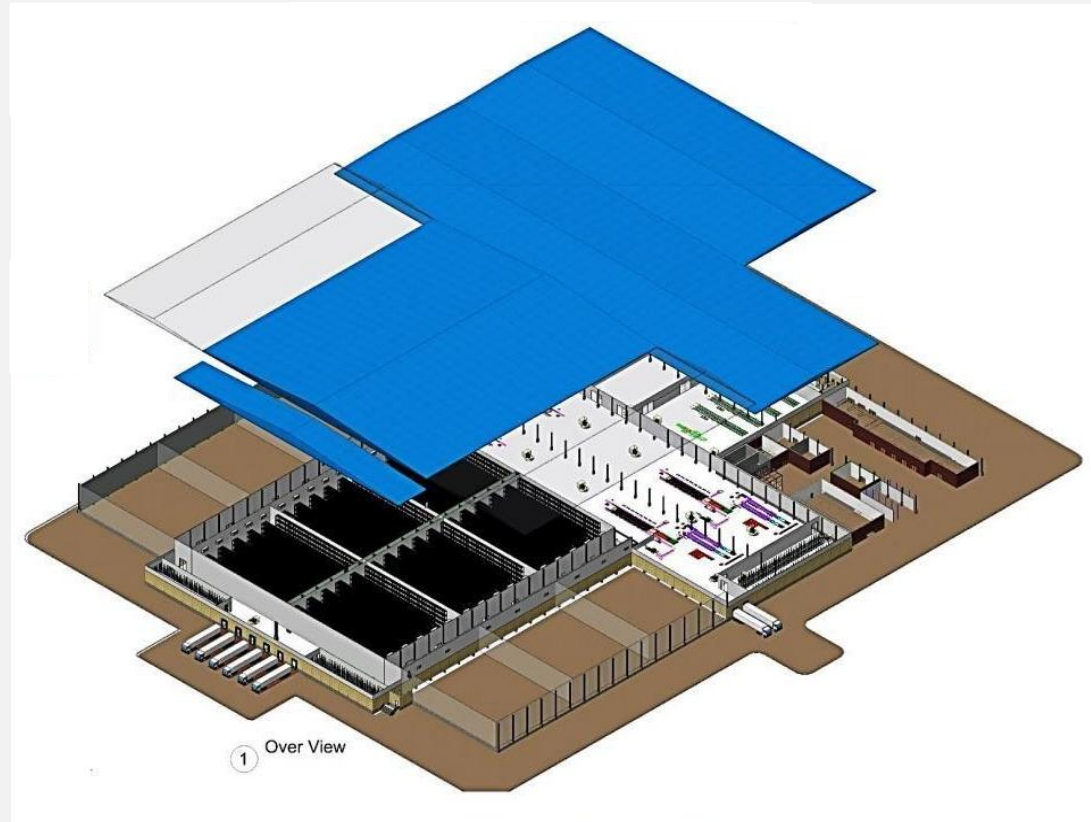


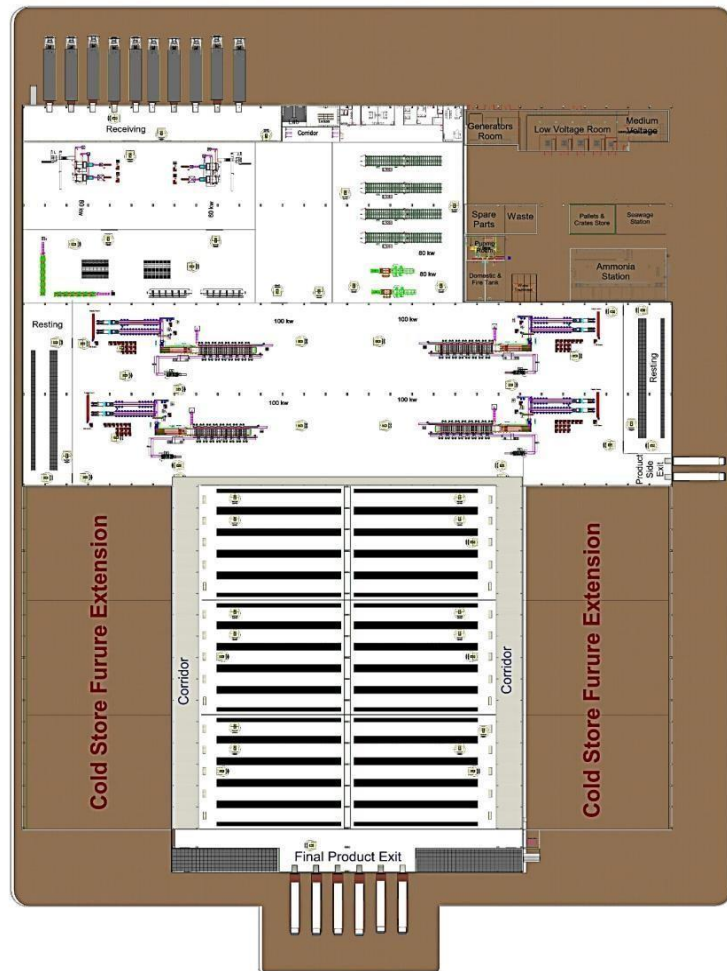
FACTORY WITH COLD STORES FOR DATES WITH CAPACITY OF 32000 TON

- **Location:** East Ewainat, New Valley, Egypt
- **Client:** RAVEDO Engineering Consultants
- **Scope:** Full BIM Architectural, Structural, MEP Modeling.
- **LOD:** 400-500

SERVICES OFFERED

- BIM modeling for Architectural, Structural, MEP & ID Modeling.
- Family creation (parametric and custom)
- Clash detection and coordination
- Scan to BIM (Point Cloud conversion)
- Construction documentation (CDs)
- Revit template customization
- BIM implementation support





2 Plan View



3 Elevation View (South)



5 Elevation View (North)



4 Section 2-2



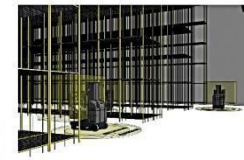
6 Receiving



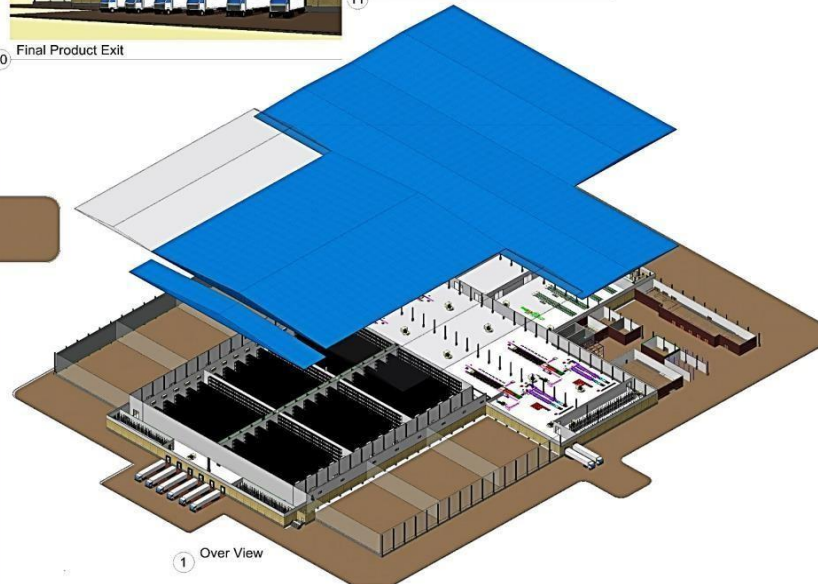
9 Product Side Exit



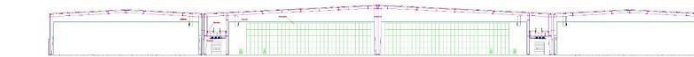
10 Final Product Exit



11 Product Storing



1 Over View



8 Section A-A
1 : 500

Count of Rooms 6 Rooms
Total Capacity 6000 Ton
Total Building Area 38,000 M²



RAVEDO Engineering Consultants

No.	Description	Date

Factory and cold stores and freezing of dates with a capacity of 6000 tons with a future expansion of 6000 tons

Arch. General

Project number 2

Date 29/10/2022

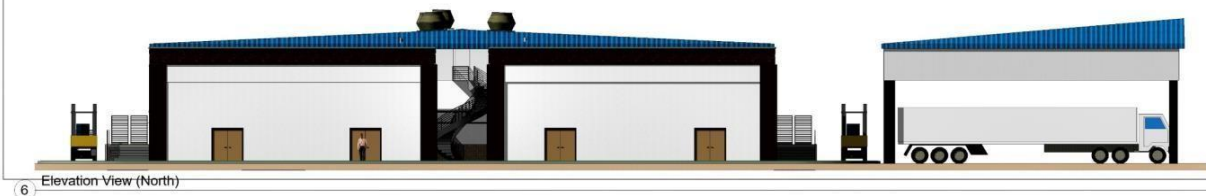
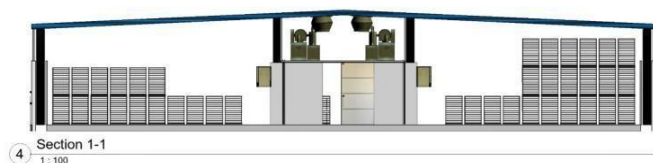
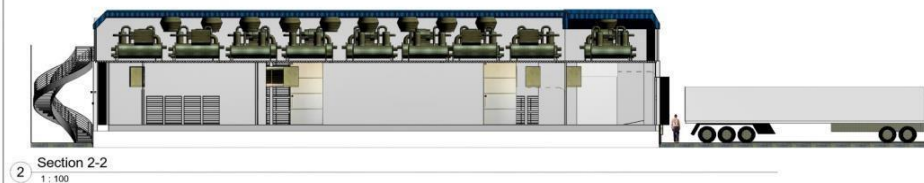
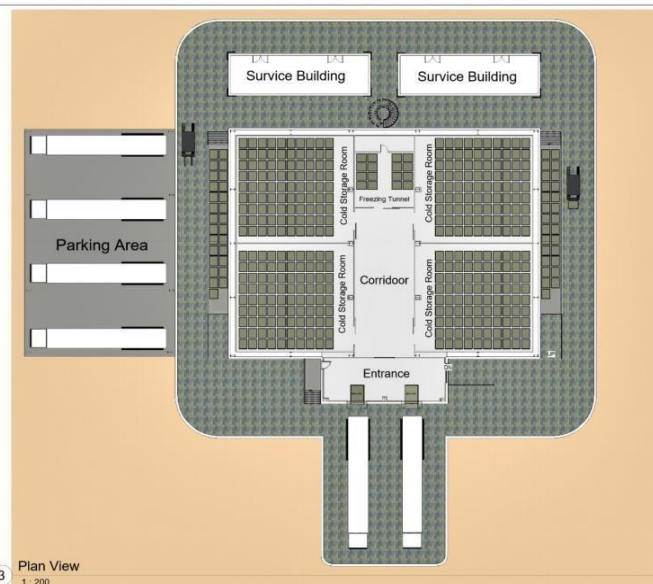
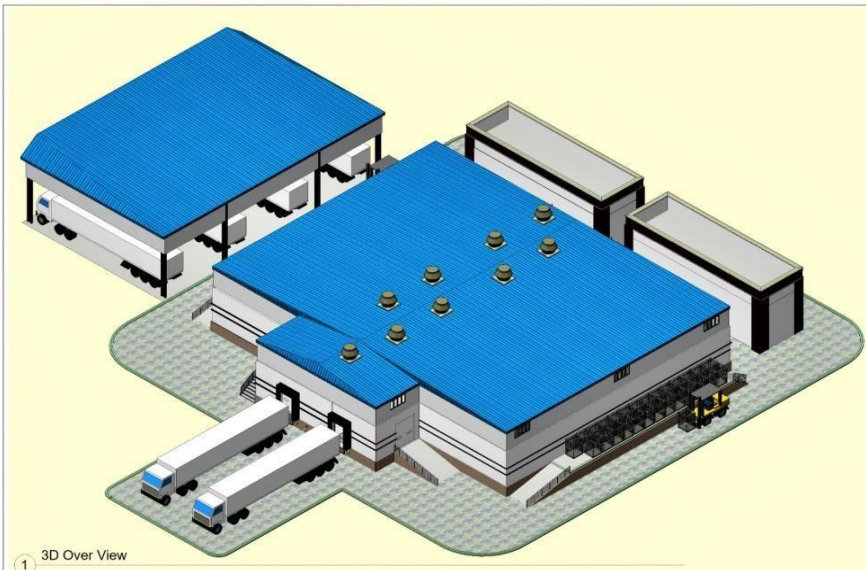
Drawn by Mahmoud ELHussainy

Checked by RAVEDO

ARCH.

Scale 1 : 500

10/2022 11:15:16 PM



RAVEDO Engineering Consultants

[illegible]

Cold Storage

Arch. General

Project number	
----------------	--

Date 29/10/2021

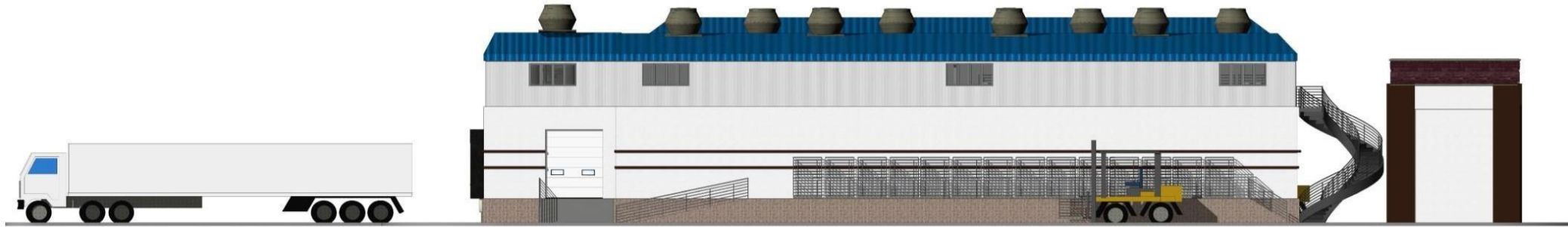
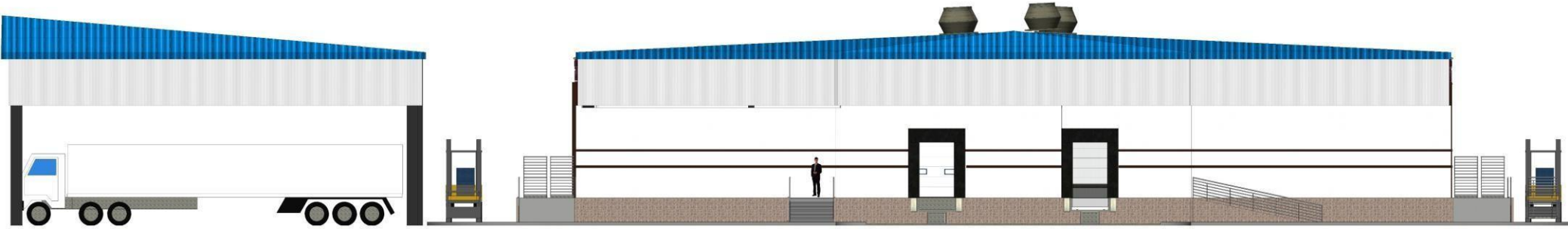
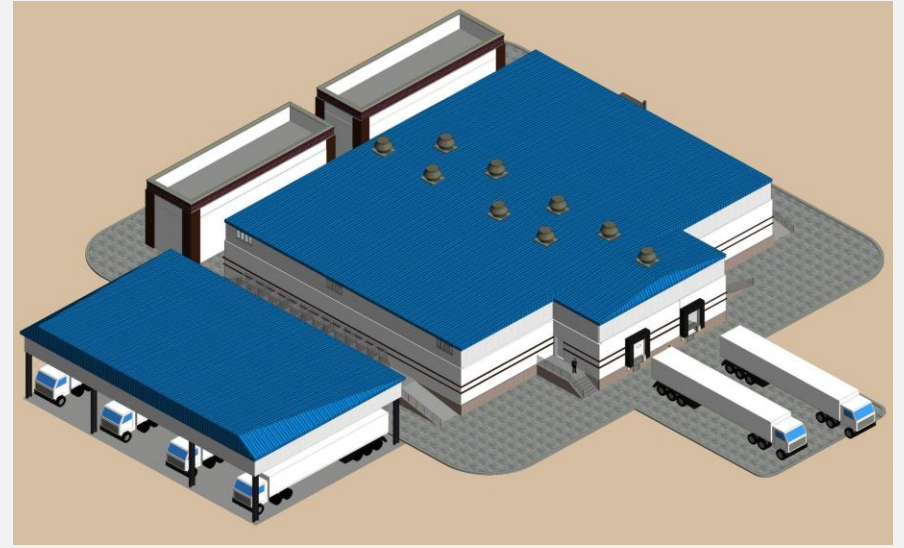
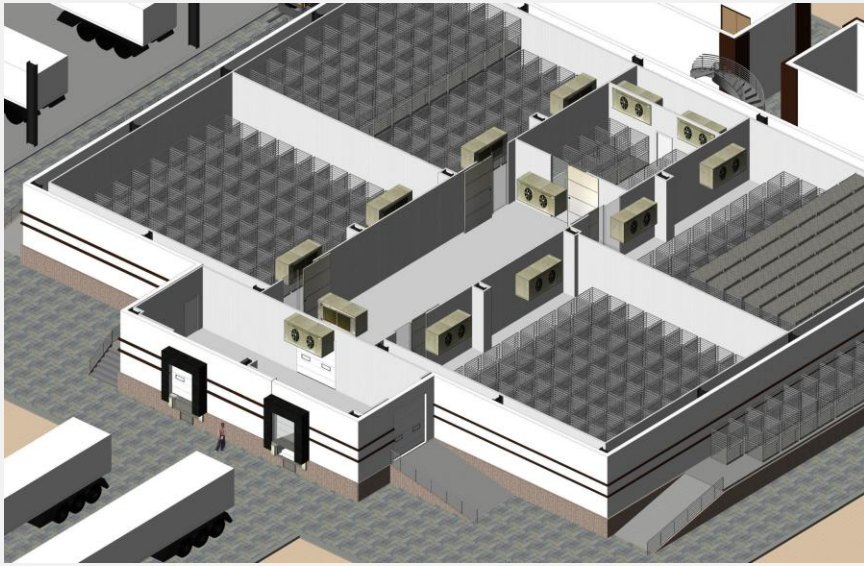
Drawn by Mahmoud ELHussain

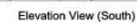
Checked by RAVEDO

ARCH.

Scale	As indicated
-------	--------------

07/30/2022 10:37:27 AM



[illegible]

RAVEDO Engineering Consultants

[illegible]

Cold Storage
Arch. General

Project number	2
Date	29/10/2022
Drawn by	Mahmoud ELHussainy
Checked by	RAVEDO

Struct.

Scale 1 : 500

ON GOING PROJECTS

TRIPLE BAY MARINA VILLAGE

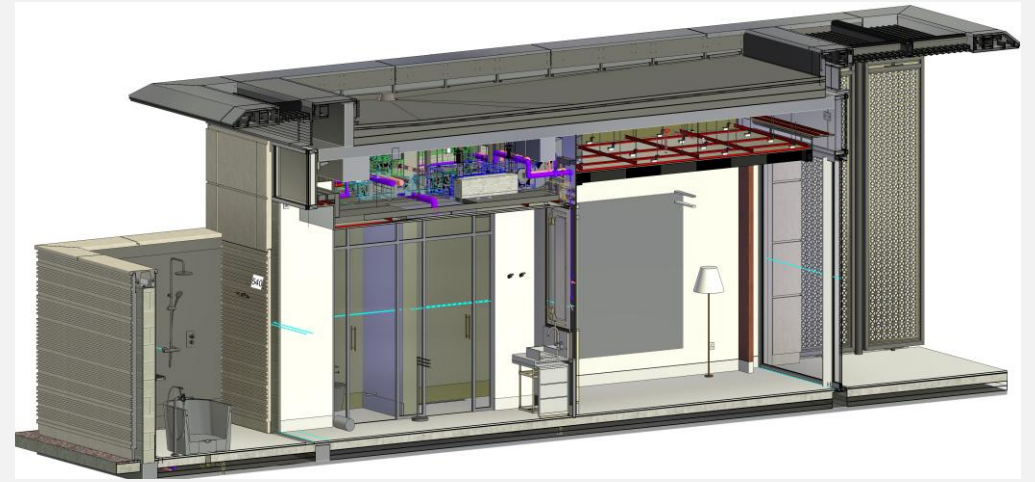
Village Boutique Hotel

- **Location:** Red Sea, KSA.
- **Client:** DOHA Extraco
- **Scope:** Full BIM External Masonry Finishes & GFRC Façade Works.
- **LOD:** 400-500

SERVICES OFFERED

- BIM modeling for Architectural Façade & ID Modeling.
- Family creation (parametric and custom)
- Clash detection and coordination
- Scan to BIM (Point Cloud conversion)
- Construction documentation (CDs)
- Revit template customization
- BIM implementation support





Modify | Walls

Properties {3D} X



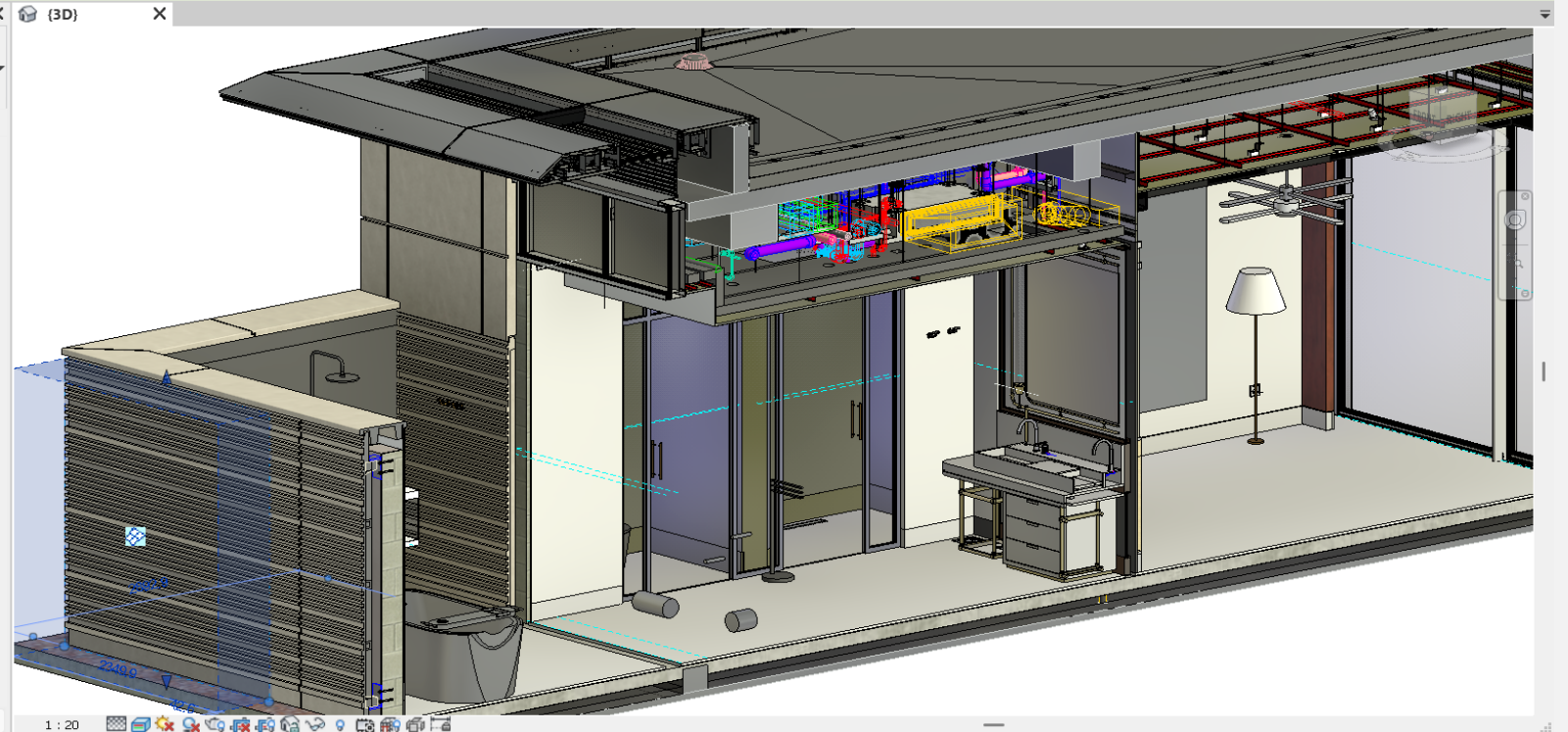
Curtain Wall
EWS-457-X1-01

Walls (1) Edit Type

Phase Demolished	None
Data	
Acoustic Rating	
AMA_PhaseCode	1
AMA_ProgramCode	TB
AMA_ProjectCode	01006
AMA_ContractCode	006C44
AMA_BuildingCode	X1
AMA_OriginatorCode	DOH
AMA_ModelNumber	ITB01006-006C44-DOH...
AMA_DisciplineCode	ENV
AMA_Level	GF
AMA_DataClassificati...	GFRC
AMA_DataClassificati...	N/A
AMA_Material	GFRC
AMA_BOQ_Code	N/A
AMA_FireRating	N/A
AMA_ElementID	7854851
AMA_RoomName	N/A
AMA_RoomNumber	N/A
AMA_RoomFunction	N/A
AMA_AreaName	N/A
AMA_OSM_Element	<input checked="" type="checkbox"/>
AMA_LeadElement	<input checked="" type="checkbox"/>
AMA_BIM_Tag	FAC-PAC

[Properties help](#)

Apply



1 : 20





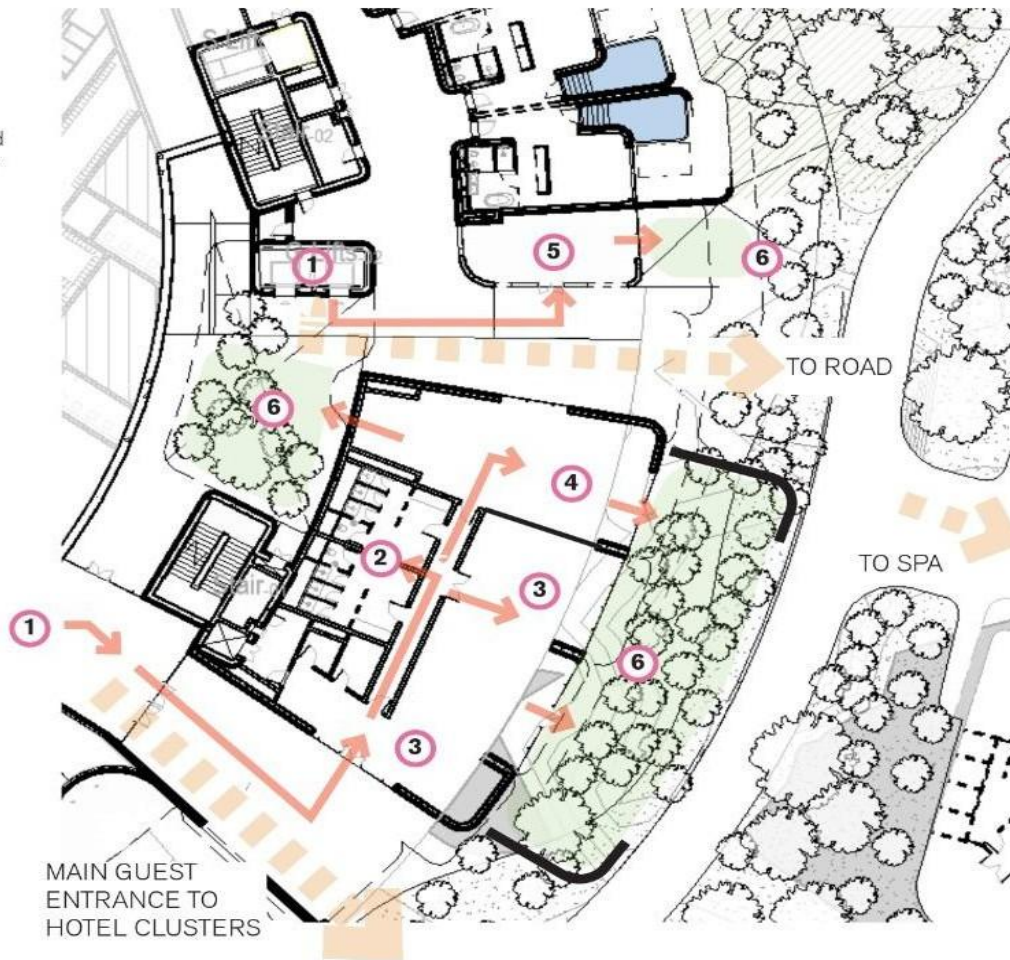
Village Boutique Hotel and Condominiums

Fitness and Children Areas - Plan Layout- Experience Diagram

Guest Experience - Access

The Fitness area has been developed with no input from the Village Boutique Hotel operator.

The layout is indicative only and should be further developed by the Interior Designer.



TRIPLE BAY MARINA VILLAGE

Marina Lifestyle Hotel

- **Location:** Red Sea, KSA.
- **Client:** DOHA Extraco
- **Scope:** Full BIM External Masonry Finishes & GFRC Façade Works.
- **LOD:** 400-500

SERVICES OFFERED

- BIM modeling for Architectural Façade & ID Modeling.
- Family creation (parametric and custom)
- Clash detection and coordination
- Scan to BIM (Point Cloud conversion)
- Construction documentation (CDs)
- Revit template customization
- BIM implementation support

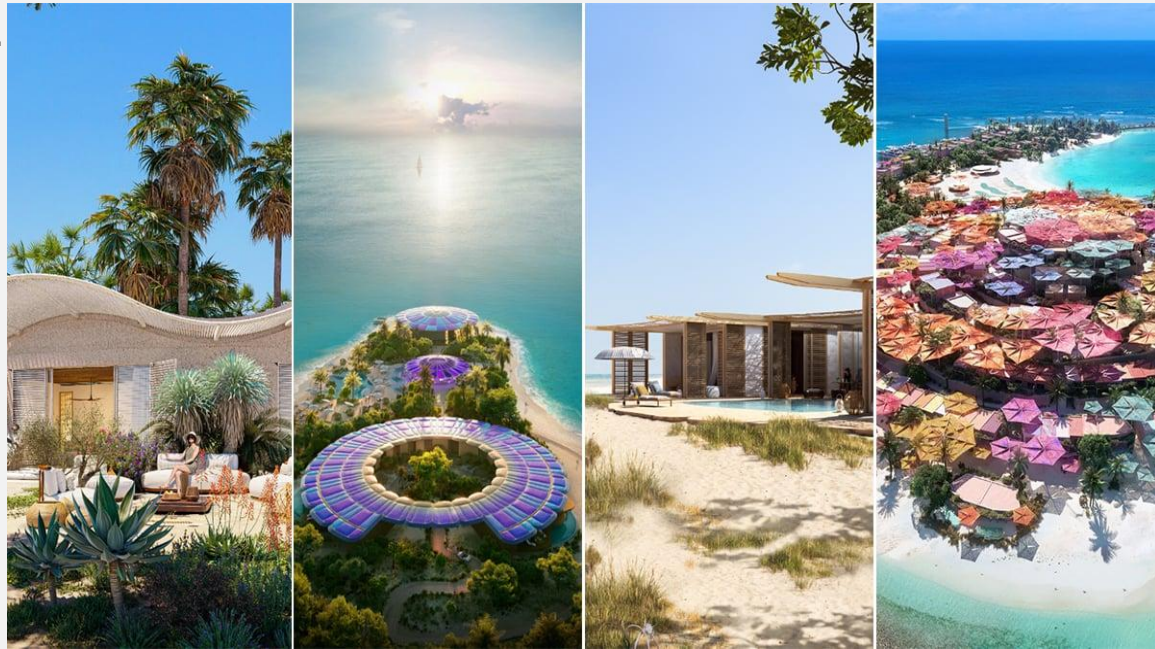


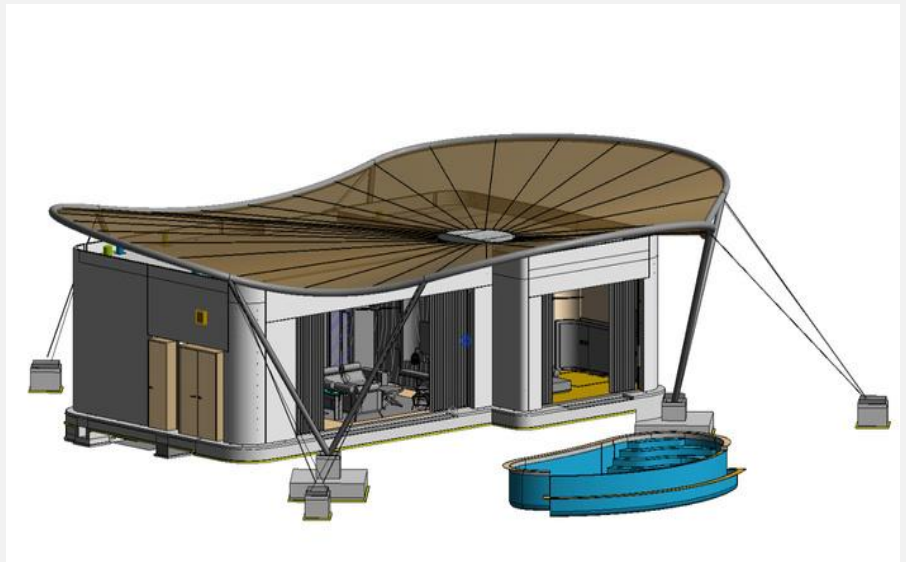
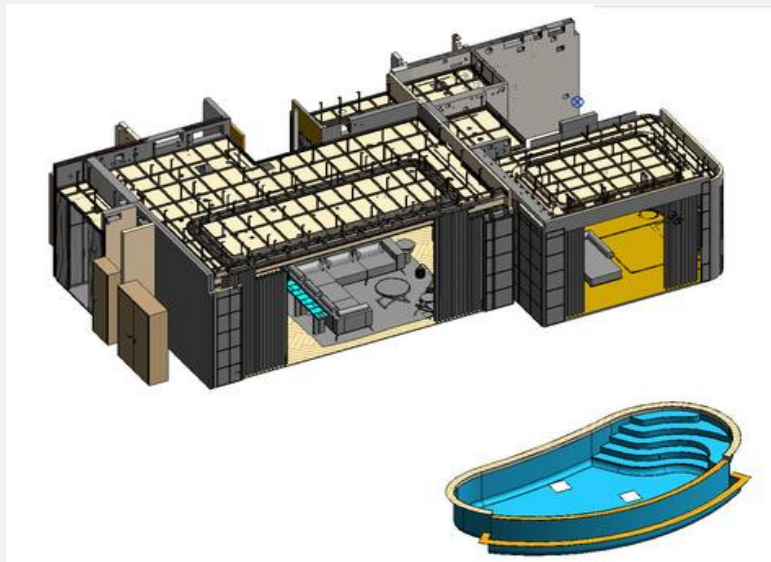
SHURAH ISLAND EAST HOTELS. Residential Villas Compound

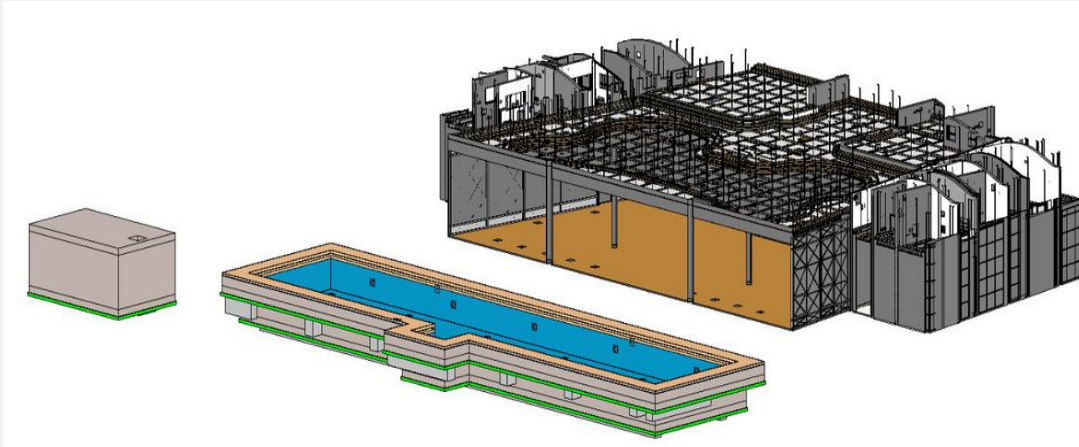
- **Location:** Red Sea, KSA.
- **Client:** DEPA Interiors
- **Scope:** Full BIM Architectural interior Modeling – Revit
- **LOD:** 400-500

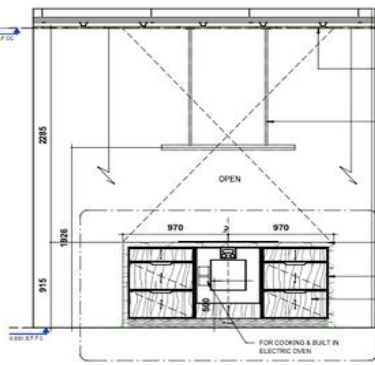
SERVICES OFFERED

- BIM modeling for Architectural & ID Modeling.
- Family creation (parametric and custom)
- Clash detection and coordination
- Scan to BIM (Point Cloud conversion)
- Construction documentation (CDs)
- Revit template customization
- BIM implementation support

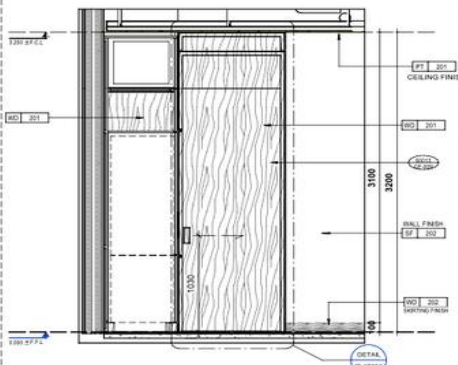




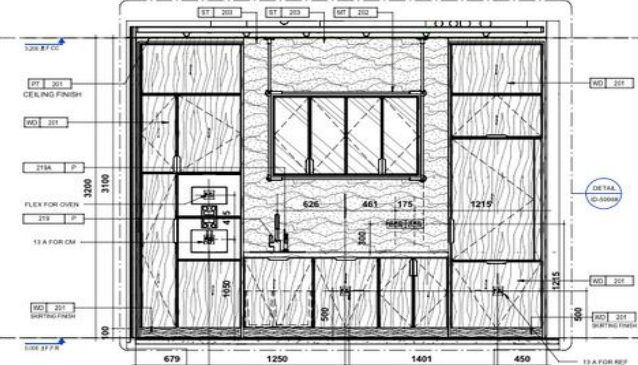




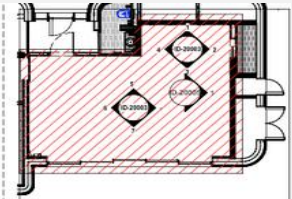
3 KITCHEN INTERIOR ELEVATION 03
ID-20003 SCALE: 1:25
REF: 55011



2 KITCHEN INTERIOR ELEVATION 02
ID-20003 SCALE: 1:25
REF: 55011



1 KITCHEN INTERIOR ELEVATION 01
ID-20003 SCALE: 1:25
REF: 55011



KEY PLAN NTS

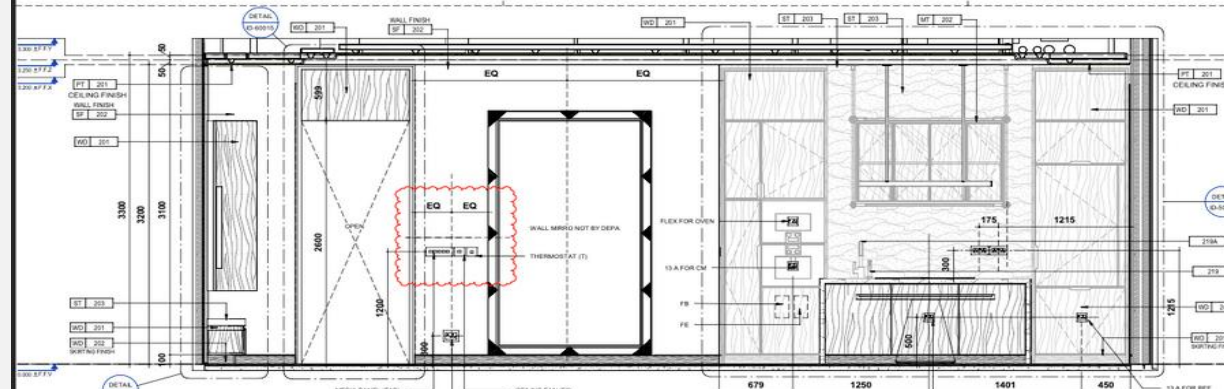
WALL FINISHES LEGEND	
ITEM	DESCRIPTION
ST 203	MODEL NUMBER TO MATCH MOSI CONTROL SAMPLE COLOR: PORTUGAL BEIGE (LIMESTONE) FINISH: FILLED & SEALED + HONED HEC311-DEP-MAT-ID-0105
SP 202	SPECIAL PAINT RHS-HEC311-DEP-MAT-ID-0105
WD 201	WD-201 OAK VENEER OAK VENEER CUT: CROWN GRAIN: OPEN GLOSSY: 30% NOTE: SUBSTRATE MATERIAL: PLAIN WEF & MR NOT ALREADY SUBMITTED VIA SUBMITTAL. RHS- HEC311-DEP-MAT-AR-001 & RHS-HEC311-DEP- MAT-AR-002-A

NOTE: FLOOR FINISH LEGEND AND FINISHES ARE MENTIONED ABOVE. REFER TO LAYOUT TAGS FOR SPECIFIC FINISHES.

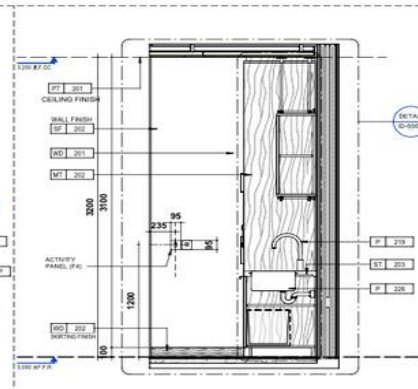
SKIRTING FINISHES LEGEND	
ITEM	DESCRIPTION
WD 201	WD-201 OAK VENEER OAK VENEER CUT: CROWN GRAIN: OPEN GLOSSY: 30% NOTE: SUBSTRATE MATERIAL: PLAIN WEF & MR NOT ALREADY SUBMITTED VIA SUBMITTAL. RHS- HEC311-DEP-MAT-AR-001 & RHS-HEC311-DEP- MAT-AR-002-A
WD 202	WD-202 WALNUT VENEER CUT: CROWN GRAIN: OPEN GLOSSY: 30% LACQUER SYSTEM: DEARISE NOTE: SUBSTRATE MATERIAL: PLAIN WEF & MR NOT ALREADY SUBMITTED VIA SUBMITTAL. RHS- HEC311-DEP-MAT-AR-001 & RHS-HEC311-DEP- MAT-AR-001

NOTE: FLOOR FINISH LEGEND AND FINISHES ARE MENTIONED ABOVE. REFER TO LAYOUT TAGS FOR SPECIFIC FINISHES.

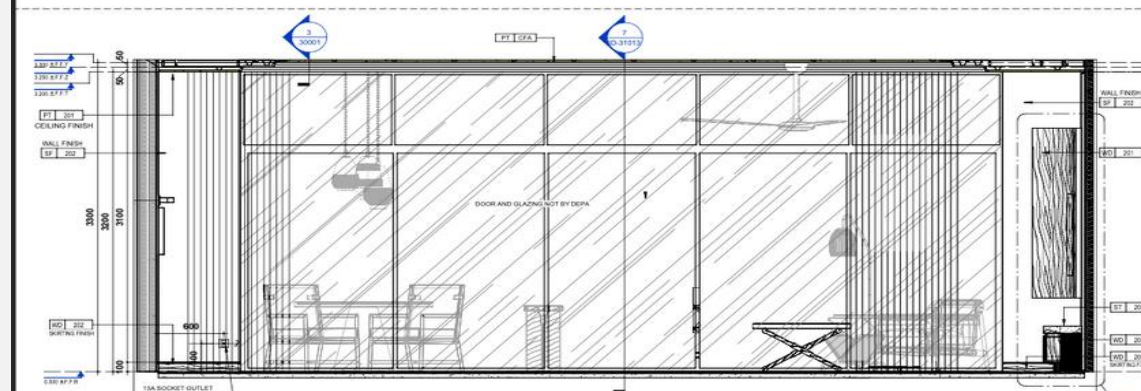
REVISION NOTE:
REVISED AS PER WORKSHOP AND ACONEX COMMENTS



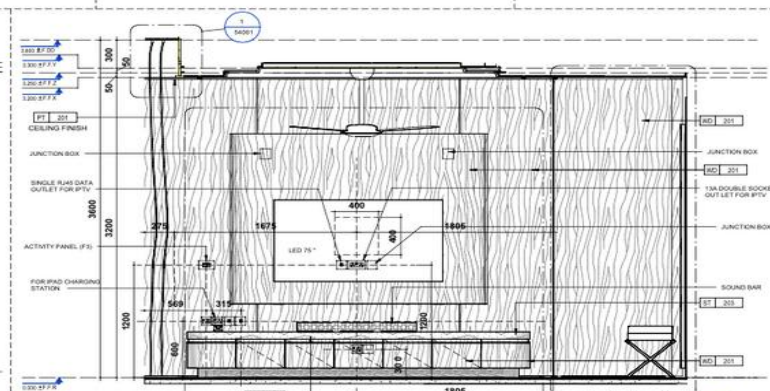
5 LIVING INTERIOR ELEVATION 05
ID-20003 SCALE: 1:25
REF: 11001



4 KITCHEN INTERIOR ELEVATION 04
ID-20003 SCALE: 1:25
REF: 55011



7 LIVING INTERIOR ELEVATION 07
ID-20003 SCALE: 1:25
REF: 11001



6 LIVING INTERIOR ELEVATION 06 (TV WALL)
ID-20003 SCALE: 1:25
REF: 11001

EXIT 10 Development

- **Location:** Reyadah, KSA.
- **Client:** Saudi Entertainment Venture
- **Scope:** Full BIM External Masonry Finishes & GFRG Façade Works.
- **LOD:** 400-500

SERVICES OFFERED

- BIM modeling for Architectural Façade Modeling.
- Family creation (parametric and custom)
- Clash detection and coordination
- Scan to BIM (Point Cloud conversion)
- Construction documentation (CDs)
- Revit template customization
- BIM implementation support



KING SALMAN PARK

- **Location:** Riyadh, KSA.
- **Client:** Saudi Entertainment Venture
- **Scope:** Full BIM UHPC Panel with GRP Base Formwork
- **LOD:** 400-500

SERVICES OFFERED

- BIM modeling for Architectural Façade Modeling.
- Family creation (parametric and custom)
- Clash detection and coordination
- Scan to BIM (Point Cloud conversion)
- Construction documentation (CDs)
- Revit template customization
- BIM implementation support



GET IN TOUCH

Connect with **MIRROR** — Your Next Smart Project Starts Here.

DUBAI, UAE



+971567482367



cs@mirrorengineering.com



Burj Al Salam – 12nd Floor – Sheikh Zayed Rd – Trade Centre 1 - Dubai

Cairo, Egypt



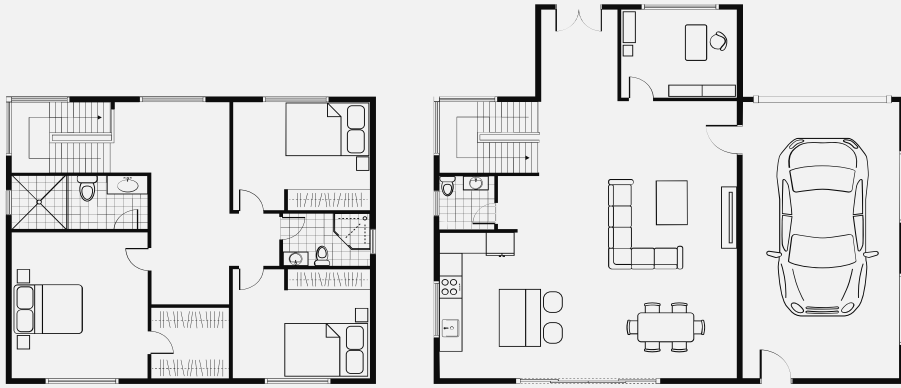
+20 1019484248



cs@mirrorengineering.com



S Teseen, New Cairo 1, Cairo Governorate 4730401, Egypt



THANK YOU

